



Surin Sabai: 3 Bedroom Private Pool Penthouse in Surin

Surin

ASKING PRICE

THB 20,960,000

3

BEDROOMS

3

BATHROOMS

262 m²

LIVING AREA

MORTGAGE FINANCING

From 3% p.a. — estimate your monthly payment online.

[Calculate mortgage for this property](#)

[View full listing online](#)

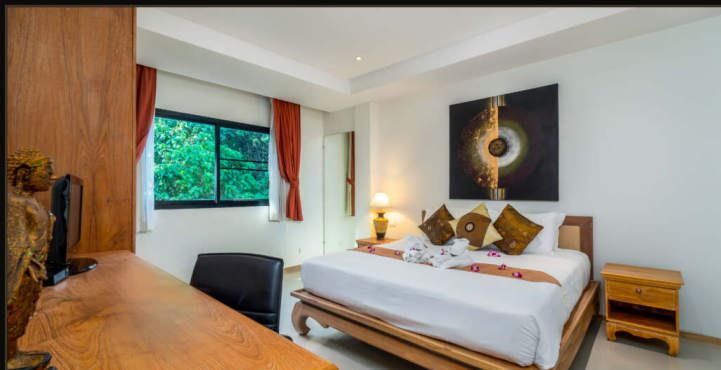
Property overview

Surin Sabai, situated in Choeng Thale, Phuket, is a versatile development project that reached completion in December 2013. Comprising of 53 units spread across 6 floors, this project was undertaken by Phuket Asia Land, the same developer responsible for Asia Baan 10 Pool Villa and Cherng Lay Villas and Condominium.

About Surin Sabai

Surin Sabai is a diverse development blending villas and condominiums in a modern Thai design, featuring units from studios to penthouses furnished with top brands. The penthouses boast private pools and spacious terraces with stunning sunset vistas of Surin Beach. The luxurious villas, ranging from 2-4 bedrooms, are adorned with sophisticated decor and carefully chosen furniture, all offering captivating panoramic views of Surin Bay. Surin Sabai provides top-notch services at the front desk and amenities including a pool, fitness center, shuttle service, and round-the-clock security. It is an ideal getaway for families, honeymooners, and those seeking a peaceful holiday. Surin Sabai is conveniently situated in a secluded area near Surin Beach, the renowned and stunning beach on Phuket Island, just 650 meters away. Its prime location allows easy access to Boat Avenue Choeng Thale, Kamala Beach, and Patong Beach, all within a 5-kilometer radius. Project Information Surin Sabai, developed by Phuket Asia Land, is situated at 25, Moo 3, Si Sunthon Road, Choeng Thale, Thalang, Phuket. Completed in 2013, this project offers a combination of condominiums and villas. The low-rise condominium comprises of 2 buildings with 6 floors and a total of 53 residential units, including studios and penthouses. The villas feature 2-4 bedrooms. Room Types – 3-bedroom Penthouse with a private swimming pool (262 sq.m) Project Facilities – Reception – Communal pool – Communal gym – Garden – 24-hour security system – CCTV – Parking Additional Facilities – Airport transfer service Direction to the Project To get to the project, start from Blue Tree Water Park Phuket and head northwest on Si Sunthon Road (Route 4025) for approximately 1.5 kilometers. Then, continue on Si Sunthon Road (Route 4030) for approximately 3.5 kilometers. Turn left and go straight for approximately 94 meters; you will find the project on the right.

Photo gallery



<https://rozmaita.property/en/listings/surin-sabai-3-bedroom-private-pool-penthouse-in-surin>

Scan to open this listing

Indicative brochure for information only. Details subject to verification. Rozmaita Property.

