



## Double Villa Yin & Villa Yin Noi | Kamala Headland

Kamala

ASKING PRICE

**THB 198,000,000**

**7**

BEDROOMS

**1050 m<sup>2</sup>**

LIVING AREA

### MORTGAGE FINANCING

From 3% p.a. — estimate your monthly payment online.

[Calculate mortgage for this property](#)

[View full listing online](#)

### Property overview

#### Villa Yin & Villa Yin-Noi – Iconic Oceanfront Residences on Phuket’s Millionaires’ Mile

##### Location

Kamala Headland, Amarin Cove Estate, Phuket

##### Architect

Charupan Wiriyawiwatt

##### Ownership

Freehold building with long-term land lease

##### Land Area

950 sqm

##### Total Bedrooms

7 (5 + 2)

##### Management

Luxury Home Villas Ltd.

#### A Masterpiece of Thai Contemporary Architecture

Perched dramatically on the cliffs of Phuket’s prestigious Millionaires’ Mile, Villa Yin and Villa Yin-Noi form one of the island’s most remarkable oceanfront estates. Designed by acclaimed Thai architect Charupan Wiriyawiwatt, these two villas perfectly blend traditional Thai craftsmanship with modern architectural precision, creating a timeless sanctuary where art, nature, and luxury coexist. The estate enjoys a rare oceanfront position with private beach access, panoramic Andaman Sea views, and breathtaking sunsets—making it one of the most exclusive addresses in Kamala.

#### Estate Configuration

The property offers two distinctive yet connected villas:

### **Villa Yin – Five Bedrooms**

- Indoor Living & Kitchen: 170 sqm
- Bedrooms & Sauna: 180 sqm
- Outdoor Terraces & Gardens: 350 sqm
- Infinity Pool: 18m x 4m
- Total Built Area: 750 sqm

Villa Yin features grand open-plan living and dining spaces framed by soaring dark-wood ceilings and floor-to-ceiling glass, seamlessly merging indoor sophistication with outdoor beauty. The interiors showcase curated art pieces, statement chandeliers, and a Minotti kitchen, perfect for elegant entertaining. Each of the five ocean-facing bedrooms includes a private terrace, ensuite bathroom, and bespoke furnishings in marble and natural stone. The villa also features a Finnish sauna and a selection of iconic design elements—such as Eames chairs and Thai sculptures—that lend character and depth to every space.

### **Villa Yin-Noi – Two Bedrooms**

- Indoor Area: 150 sqm
- Outdoor Terrace: 120 sqm
- Covered Pool: 8m
- Total Built Area: 300 sqm

Villa Yin-Noi serves as a self-contained residence that connects to the main villa through landscaped gardens. It's an intimate retreat featuring a master suite with a freestanding stone bathtub, glass-framed rain shower, and private terrace overlooking the sea. A second bedroom provides flexibility for guests, children, or staff. The villa's private pool, lush tropical garden, and art-filled interiors create an environment ideal for relaxation, wellness, or creative inspiration.

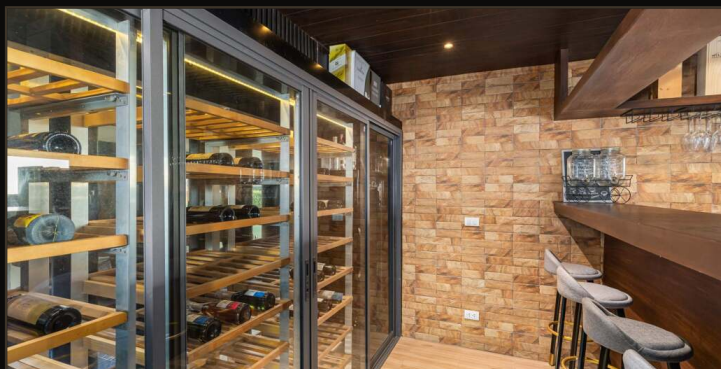
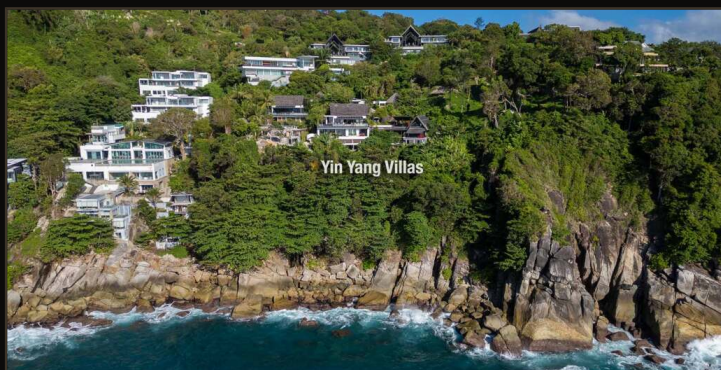
### **Design & Atmosphere**

The architectural composition of the property reflects a perfect feng shui balance, cascading gently from Villa Yin's elevated position down through Villa Yin-Noi's garden terraces to the oceanfront below. Natural materials—marble, teak, glass, and stone—combine to form spaces that feel both contemporary and spiritual. This rare harmony between structure and setting evokes a deep connection to nature while offering the comforts of world-class design.

### **Amenities & Services**

- Two infinity-edge swimming pools (18m and 8m)
- Private beach access
- Spa and sauna
- Full resort amenities including coffee shop
- 24/7 management and rental services by Luxury Home Villas Ltd.
- Beautifully maintained grounds and facilities

## Photo gallery



<https://rozmaita.property/en/listings/double-villa-yin-villa-yin-noi-kamala-headland>

Scan to open this listing

Indicative brochure for information only. Details subject to verification. Rozmaita Property.

